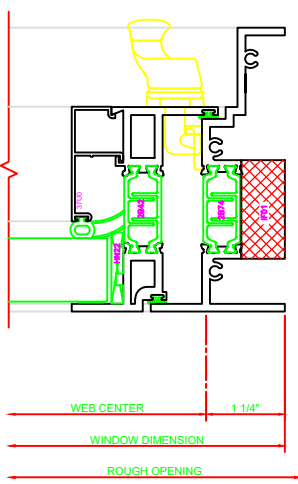
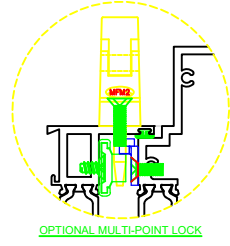


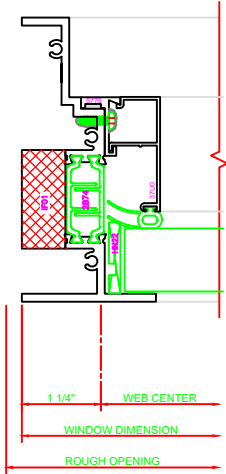
430 JAMB
SERIES: 450X
CASEMENT IN
4-BAR ARMS



431 JAMB
SERIES: 450X
CASEMENT IN



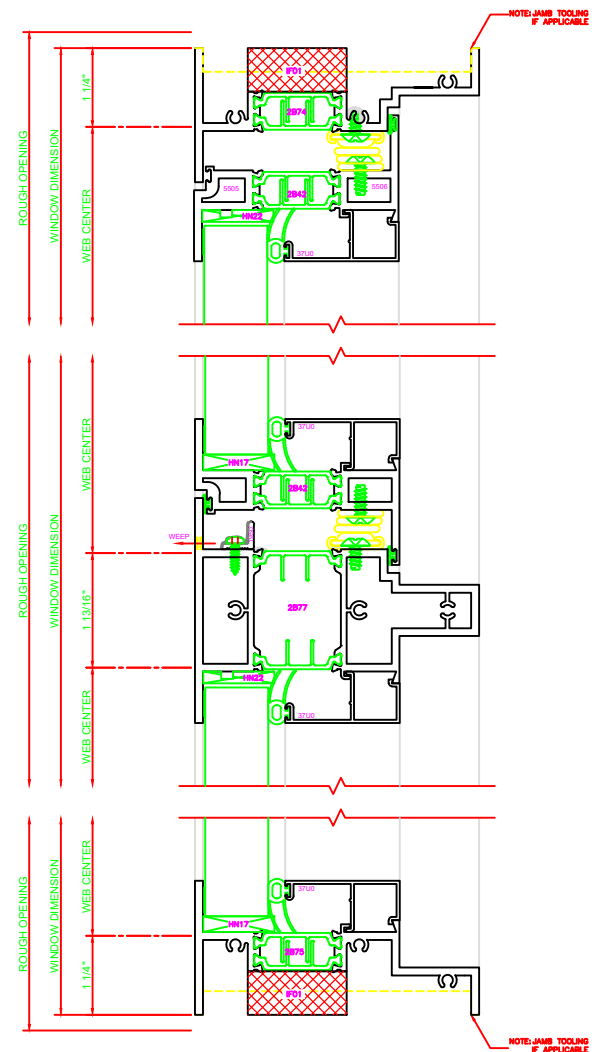
130 HEAD
SERIES: 450X
CASEMENT IN
4-BAR ARMS



402 JAMB
SERIES: 450X
FIXED

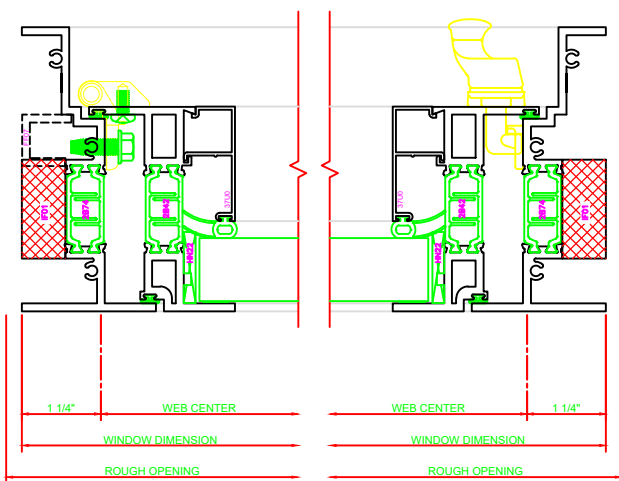
533 MEETING RAIL
SERIES: 450X
C.I./FIXED
4-BAR ARMS

200 SILL
SERIES: 450X
FIXED

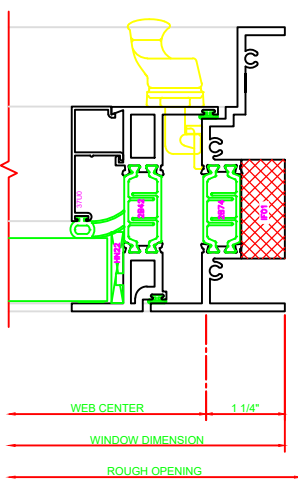


4-BAR ARMS BUTT HINGE

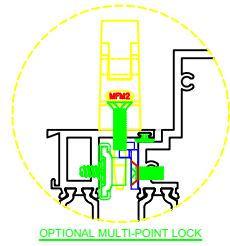
13 = ERECTOR NOTE:
THE HINGED JAMB FRAME SHALL BE INSTALLED PLUMB. ALL HINGES SHALL BE SECURELY BLOCKED AND ANCHORED TO THE CONDITION THROUGH THE HINGES OR AS CLOSE AS POSSIBLE TO THE HINGES.



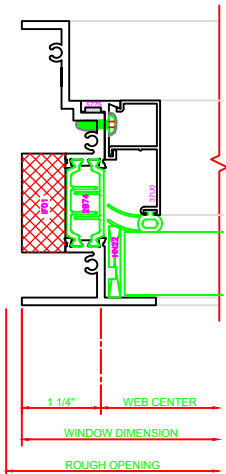
432 JAMB
SERIES: 450X
CASEMENT IN
BUTT HINGE



431 JAMB
SERIES: 450X
CASEMENT IN



131 HEAD
SERIES: 450X
CASEMENT IN
BUTT HINGE



402 JAMB
SERIES: 450X
FIXED

537 MEETING RAIL
SERIES: 450X
C.I./FIXED
BUTT HINGE

200 SILL
SERIES: 450X
FIXED

